

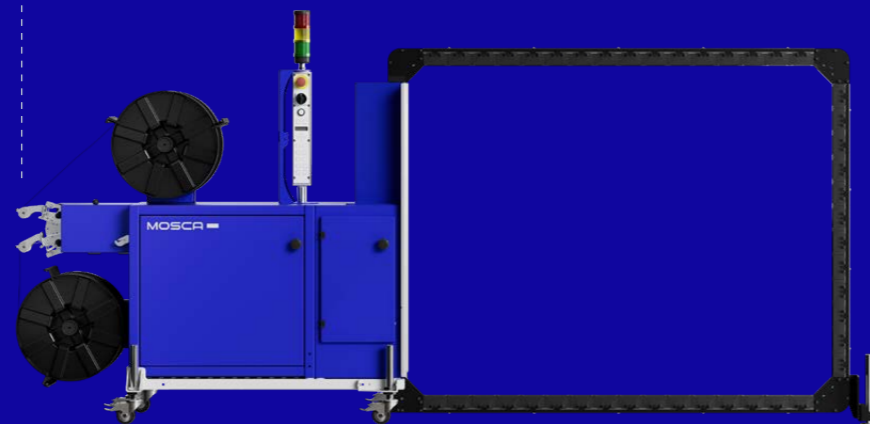
SoniXs MS-6 KR/ KR-OV/ KR-ZV

REVOLUTIONIZE YOUR
END-OF-LINE [PACKAGING]
PERFORMANCE

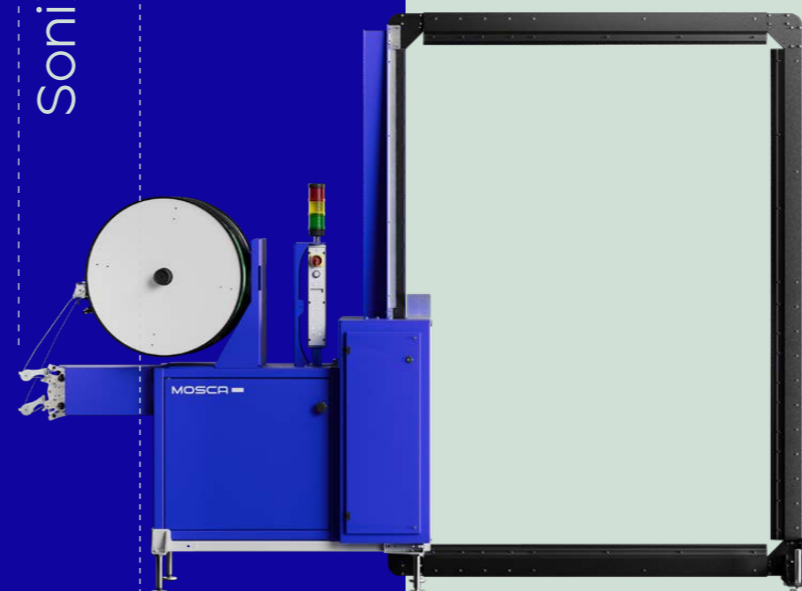
MOSCA

EN

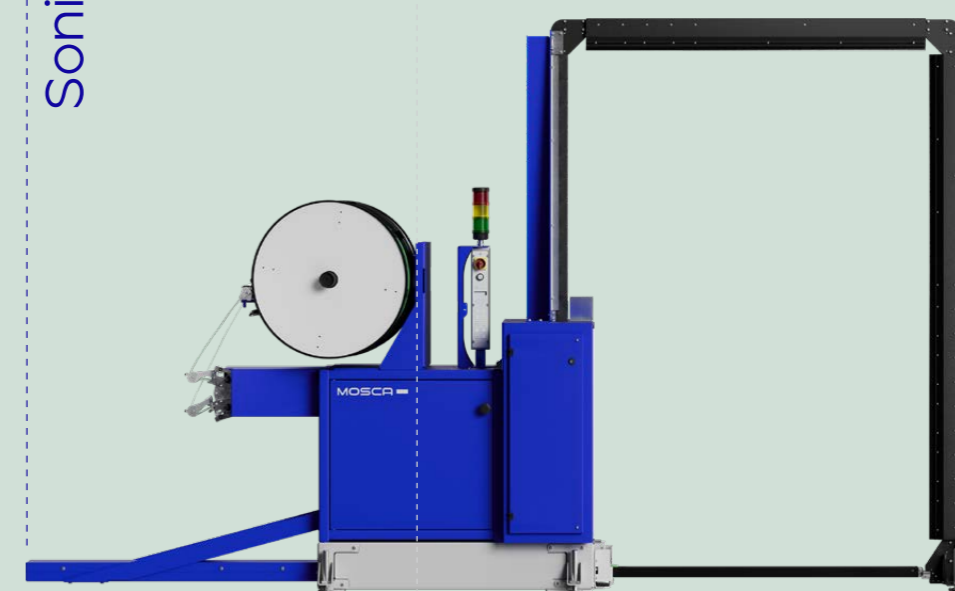
SoniXs MS-6 KR



SoniXs MS-6 KR-OV



SoniXs MS-6 KR-ZV



NONSTOP RESPONSIBLE
NONSTOP RELIABLE
NONSTOP INTELLIGENT
NONSTOP PROGRESSIVE

Automatic Strapping Machine



Mail Order & Logistics, Building Materials
& Containers, Food & Beverage



SoniXs Sealing Unit | Standard-6



For PP and PET straps



Lateral sealing unit



NONSTOP PERFORMANCE

SoniXs MS-6 KR / KR-OV / KR-ZV

AUTOMATIC STRAPPING MACHINE WITH LATERAL SEALING UNIT AND FLAP FRAME SYSTEM

The SoniXs MS-6 KR automatic strapping machine and the SoniXs MS-6 KR-OV & SoniXs MS-6 KR-ZV variants are specially designed for securing bulky products such as white goods or furniture during transport. The lateral position of the sealing unit makes the machines particularly suitable for low conveyor heights and also protects the sealing unit from dust and dirt.

Thanks to the horizontal movement of the sealing unit in the SoniXs MS-6 KR-ZV & -OV, the products do not have to fit exactly on the sealing unit.

The SoniXs MS-6 KR-ZV is the entry-level machine for pallet strapping. It also has a movable strap lance that can be used to strap pallets, mesh boxes, dollies, and displays standing on the floor, among other things.

Depending on requirements, customer-specific frame sizes are possible for the machines.

mosca.com

TECHNICAL DATA

Performance:

[KR] up to 24 cycles / min at a frame size of 1,200 x 2,000 mm

[KR-OV] up to 15 cycles / min at a frame size of 850 x 2,000 mm

[KR-ZV] up to 6 cycles / min at a frame size of 900 x 1,600 mm

Frame Size:

[KR]

Width: 400 - 2,400 mm, in 400 mm steps
Height: 1,200 - 2,400 mm, in 400 mm steps
Freely combinable up to a maximum frame circumference of 8,000 mm

[KR-OV]

Width: 650 - 2,850 mm, in 200 mm steps
Height: 1,000 - 2,800 mm, in 200 mm steps
Freely combinable up to a maximum frame circumference of 8,350 mm

[KR-ZV]

Width: 700 - 1,500 mm, in 200 mm steps
Height: 1,000 - 2,800 mm, in 200 mm steps
Freely combinable up to a maximum frame circumference of 8,350 mm

Conveyor Height:

[KR] 170 - 565 mm (Standard)
170 - 910 mm (Option - increased conveying height)

[KR-OV]

400 - 575 mm (Standard)
500 - 875 mm (Option - increased conveying height)

[KR-ZV]

50 - 250 mm (Standard)
0 - 150 mm (Option - lower conveying height)
225 - 700 mm (Option - increased conveying height)

Straps:

PP straps: Width: 12 mm
Thickness: 0,55 - 0,8 mm

PP strap 12 x 0,55 mm
max. frame circumference:
[KR] 4.800 mm
[KR-OV / KR-ZV] 4.900 mm

PET straps: Width: 9,5 - 12 mm
Thickness: 0,54 mm

Strap Coil Dispenser:

Core diameter: 200 mm (optional 406 mm PET)
Core width: 190 mm (optional 150 mm PET)

Electricity:

Voltage: 100 - 240 V, 50 / 60 Hz, 1L+N+PE (others on request)
Power consumption:
[KR] approx. 0,2 kW
[KR-OV / KR-ZV] 0,3 kW depending on options

Weight:

[KR] 250 - 500 kg
[KR-OV / KR-ZV] 300 - 500 kg

HOLISTIC SUPPORT WITH THE MOSCA SYSTEM

Suitable consumables available directly from Mosca. Can be combined with Mosca maintenance contracts - all from one source.

CONTACT US FOR A PERFORMANCE CONSULTATION!

mosca.com

Mosca GmbH
Gerd-Mosca-Straße 1 · 69429 Waldbrunn

info@mosca.com · +49 6274 / 932-0

STANDARD FEATURES

SoniXs ultrasonic sealing unit in standard-6 version

Extremely low energy consumption

Can be integrated into most production lines

CE marking incl. conformity declaration

Easy accessibility and tool-free dismantling of strap path components

- [KR]
 - Controlled flap frame with magnetic closing and opening
 - Frame size gradation in 400 mm steps
 - Hinged table top made of stainless steel
 - 4 swivel castors (all lockable)

Dispenser variably mountable

Adjustable strap tension via control panel

Easy operation over digital display in the control panel

- [KR-OV / KR-ZV]
 - Flap frame with magnetic closing
 - Horizontal stroke of the strapping head up to 340 mm
 - Frame size gradation in 200 mm steps

Manual strapping release via pushbutton in the control panel

[KR-ZV]
With strap lance for pallet strapping

Stepless turnable control panel (0 - 180°) for many-sided operation

OPTIONS

Manual strapping release via flexible foot pedal

Signal exchange via 16-pin plug

Dispenser core Ø406 mm

Fully automatic strap coil change by double dispenser

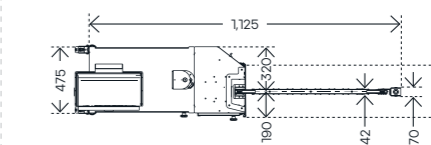
Signal light (LED)

Special conveying heights

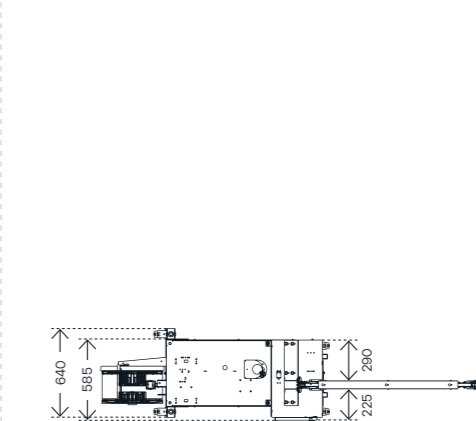
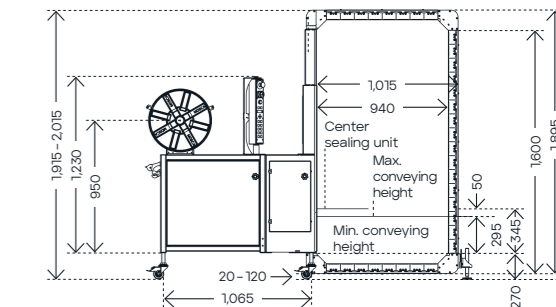
Low strap detection with signal in the control panel

- [KR-ZV]
 - Additional table release
 - Climbing assistance from a conveying height of 600 mm
 - Noise reduced lance movement

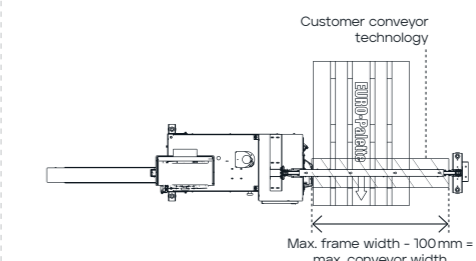
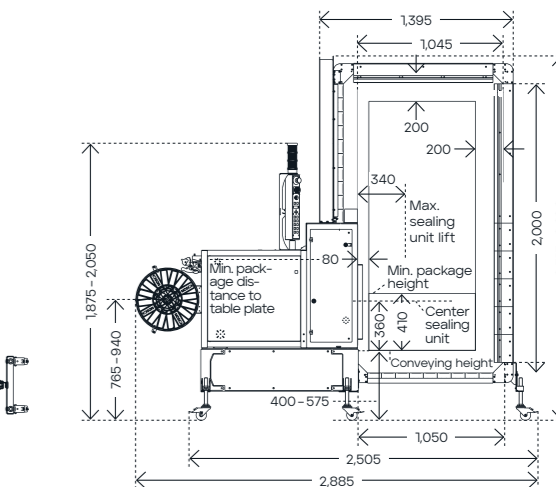
DIMENSIONS / WORKING WIDTH MACHINE (in mm)



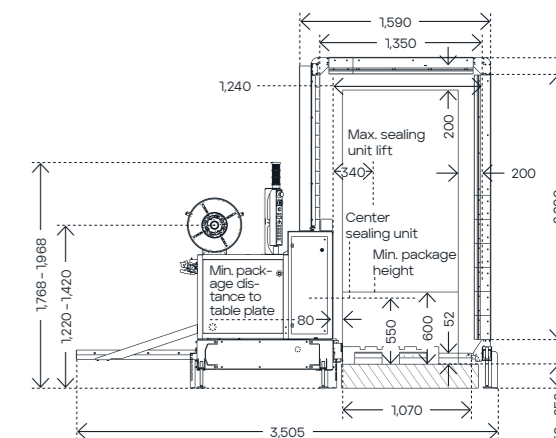
[MS-6 KR]



[MS-6 KR-OV]



[MS-6 KR-ZV]



Technical layout complies with MS-6 KR 800 x 1,600 mm | MS-6 KR-OV 1,050 x 2,000 mm | MS-6 KR-ZV 1,100 x 2,200 mm

08 / 25 Subject to alterations